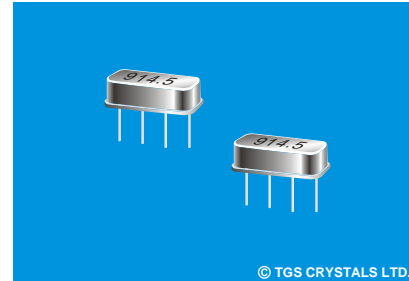


FEATURES

- The SFN914.5-F is a low-loss, compact, and economical surface-acoustic-wave (SAW) filter de-signed to provide front-end selectivity in 914.50MHz receivers.

APPLICATIONS

- Communication



© TGS CRYSTALS LTD.

SPECIFICATION *

Parameters	Product	Option Code
	SF	SF
Centre Frequency(fc) :	914.500MHz	▲ 914.500
Temp. Stability	Operating Case Temp.(Tc): +85°C Max.	▲
	Turnover Temperature(To): 55°C Max.	▲
	Turnover Frequency(fo): fc 914.5 MHz	▲
	Frequency Temp. Coefficient (FTC): 0.032ppm/°C ²	▲
Insertion Loss(IL):	4.5 dB Max.	▲
User signal Passband:	±2.0MHz	▲
Operating Temp. Range:	-10°C~+60°C	▲
Storage Temp. Range:	-40°C~+85°C	▲
Frequency Aging Absolute Value During the First Year(IfA):	≤ ±10ppm/year	▲
Rejection	at fc-400MHz~fc-40.8MHz: 40dBMin.	▲
	at fc+50MHz~fc+400MHz: 40dBMin.	▲
CW Therefore Power Dissipation:	+13dBm	▲
DC Voltage Between Any Two Pins:	±30V DC	▲
Case Temperature:	-40°C~+85°C	▲
Holder Type:	F-11	△ F
Package:	Tube	△ U

- ▲ Standard * Specifications Subject to Change Without Notice
- △ Optional: please specify required code when inquiring or ordering
- △ Note: Electrostatic sensitive device. Observe precautions for handling

PACKAGE

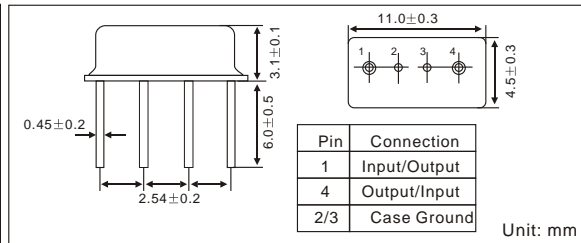
- Standard package in Tube: 20pcs/Tube.

PART NUMBER GUIDE

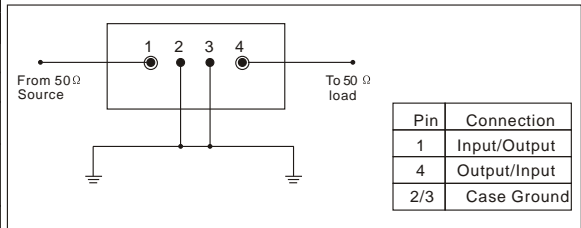
TGS	SFN	914.5	F	U
Mark	SAW Filter	Centre Freq.	Holder Type	Package

e.g. TGS SFN 914.5 F U

DIMENSIONS



TEST CIRCUIT



TYPICAL FREQUENCY RESPONSE

